

# Staff Report



February 13, 2024

**To** Board of Education (Public Meeting)  
**From** Ray Velestuk, Secretary-Treasurer/CFO  
**Re** **Proposed Boundary Review – Cooper Meadows Development**

---

## **RECOMMENDATION:**

THAT the Board of Education approve the revised boundaries for the Margaret Stenersen Elementary and Prince Charles Elementary catchments; and

THAT the Board of Education approve the revised boundaries for the Clayburn Middle and William A. Fraser Middle catchments; and

FURTHER THAT the Board of Education approve the revised boundaries for the Robert Bateman Secondary and Yale Secondary catchments, as presented.

## **BACKGROUND:**

Cooper Meadows is a large development of 400 detached homes/townhomes on McMillan Road at McKee Road in east Abbotsford. The first phase, 190 townhomes and 26 row homes, is currently under development application. Construction has not started. New streets will be part of this development, including an extension of McKee Road that will run west from the McKee Road/McMillan Road intersection, through the development property, over Sumas Way and connect to George Ferguson Way. The new housing is estimated to yield 78 elementary, 43 middle and 35 secondary school age children once buildout is complete.

In the current configuration the elementary, middle & secondary catchment boundaries run through the development property, so it is split between the catchments at each level. If the proposed changes are approved, all students would attend Margaret Stenersen Elementary, William A Fraser Middle and Yale Secondary, diverting them away from schools that will be impacted by the McKee Neighbourhood Plan area to the east.

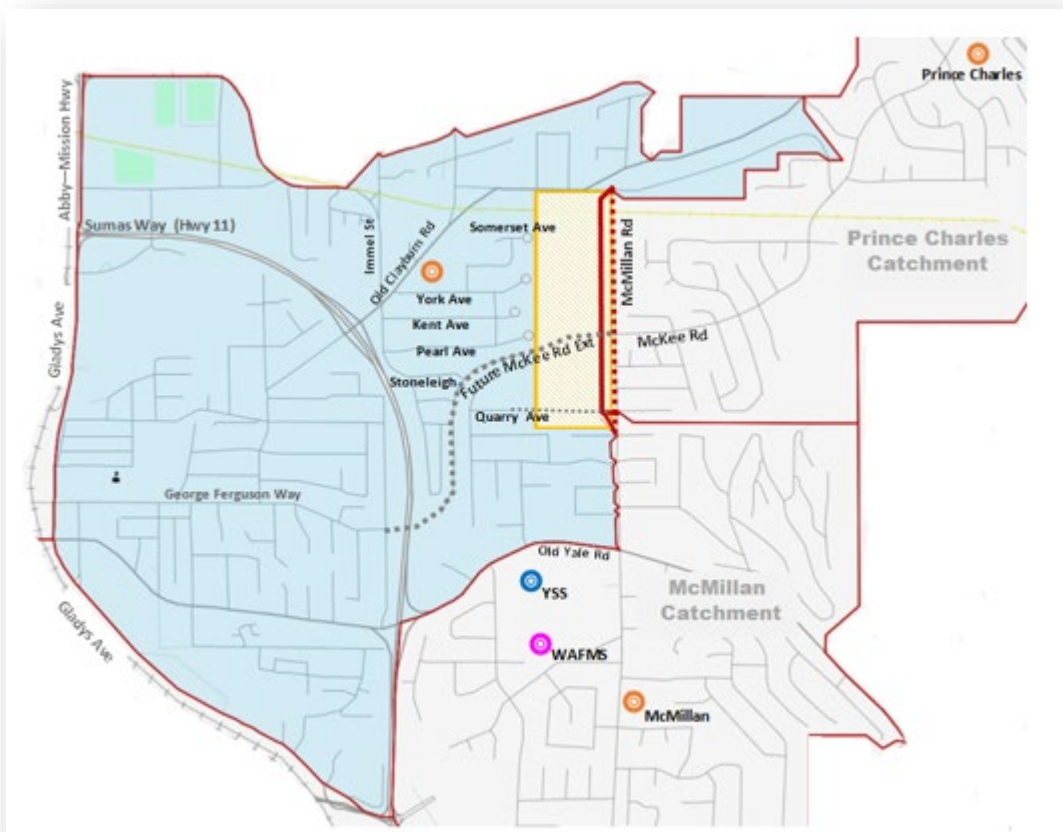
Abbotsford City Council recently approved the McKee Neighbourhood Plan, 1900 acres of undeveloped land that is slated for new neighbourhoods. Residential growth in this area will create extensive enrolment growth in the Prince Charles Elementary, Clayburn Middle and Robert Bateman Secondary catchments.

Geographically, Margaret Stenersen Elementary is much closer to Cooper Meadows (within a 1 km radius) than Prince Charles. With completion of the 8 classroom addition in 2024, the school will be able to accommodate expected enrolment from this development.

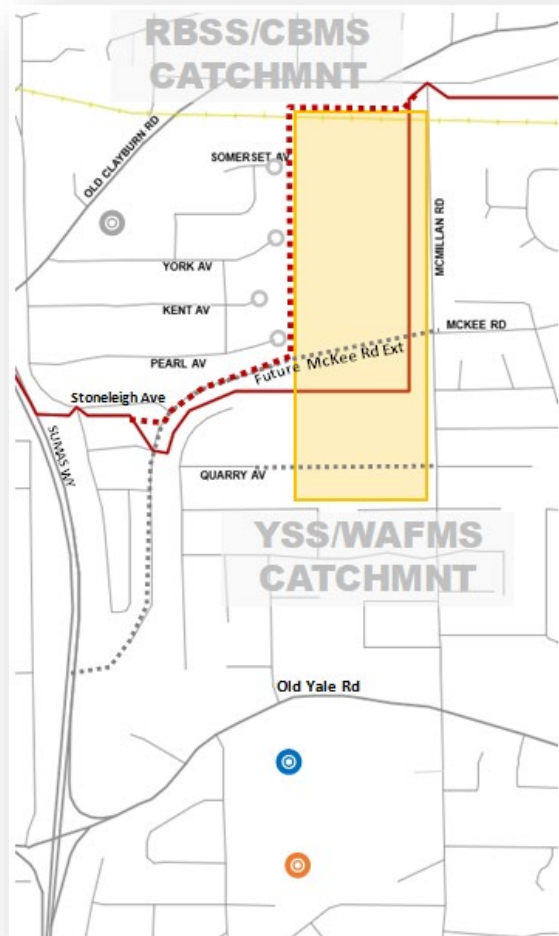
William A Fraser Middle and Yale Secondary are just over 1 km in distance via McMillan Road to Old Yale Road/Blatchford Way, while Robert Bateman Secondary and Clayburn Middle are over 2.5 km in distance via McMillan Road and Old Clayburn Road. There is ongoing development in the Yale/Fraser catchment and additions to both schools are included in the Board’s 2024 Capital Plan submission.

Boundary Description

The existing elementary boundary runs west of McMillan Road from High Drive to Old Yale Road with properties on both sides of McMillan Road included in the Prince Charles catchment. The proposed change would move the boundary to to run along McMillan Road between High Drive and Chantrell Place.



The existing middle/secondary boundary runs west of McMillan Road from High Drive to McNab Avenue with properties on both sides of McMillan Road included in the Yale Secondary/William A Fraser Middle catchment and future new streets west of McMillan Road included in the Robert Bateman/Clayburn Middle catchment. The boundary then turns west and cuts through the development property to the 2800 block of Sumas Way with the southern part of the property in the Yale Secondary/William A Fraser Middle catchment. The proposed change would move the upper part of the boundary to the west side of the development property from Old Clayburn Road to the point where the future extension of McKee Road will be built, then it would turn west to the 2800 block of Sumas Way.



The Board approved a boundary review at its October 10, 2024 Public Board meeting and consulted with the communities affected utilizing the Board’s online engagement tool ([engage.abbyschools.ca](https://engage.abbyschools.ca)).

In total 1008 participants visited the engagement site with one hundred and nineteen (119) responses being received. Forty-four (44, 37%) agreed with the proposed changes, while 75 respondents did not agree. A summary of the online engagement is attached. Generally, respondents concerns related to the overall

capacity of schools in the area and ability of the existing school infrastructure to support current and future needs of the school communities.

It is important to note that the proposed boundaries take into account not just projected enrolments, but district transportation services and current capital plan priorities. While most respondents were not supportive of the boundary adjustment the recommendation does provide the most reasonable solution and is supported by the current capital plan.